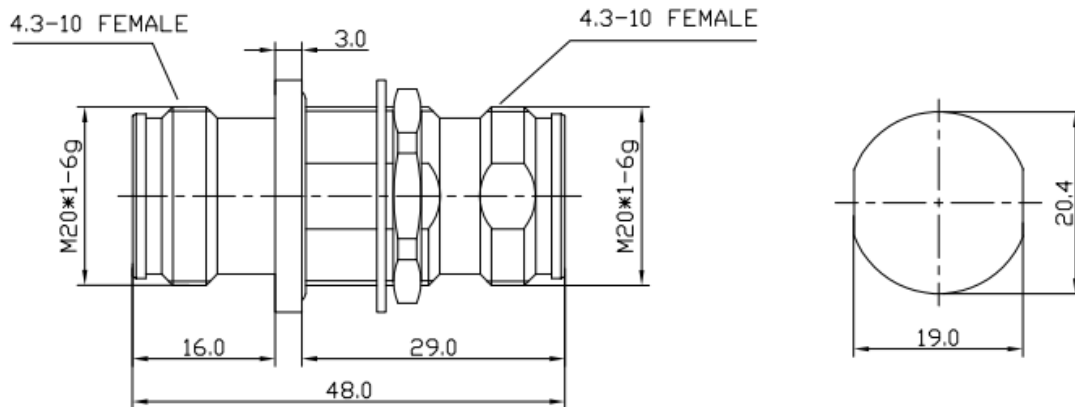


## 1. Figure



## 2. Product Description

1). Cable Type:	Test Connector	
3). Connectors	Connector	4.3-10 Female to 4.3-10 Female Bulkhead
	Inner Conductor Pin	Brass/Silver Plating
	Body&Outer Conductor	Brass/Trimetal Plating
	Insulator	PTFE
	Gasket	Silicon Rubber
	Nut	Brass/Nickel Plating

## 3. Electrical Characteristics

Characteristics Impedance	50 Ohm
Frequency Range	DC~6GHz
Insulation Resistance	$\geq 5000M\Omega$
Dielectric Withstanding Voltage	2500V rms (DC)
Operating Voltage	1000V rms
Insertion Loss @DC-3.0 GHz	$\leq 0.1dB$
VSWR @DC-6.0 GHz	$\leq 1.15$
PIM	$\leq -165dBc$

## 4. Environmental and Mechanical Specifications

Durability (matings)	$\geq 500$ cycles
Mechanical Shock Test Method	MIL-STD-202, Method 213, Test Condition D
Vibration Test Method	MIL-STD-202, Meth. 204, Cond. A
Temperature Range	-40°C to +85°C
RoHS	Compliant