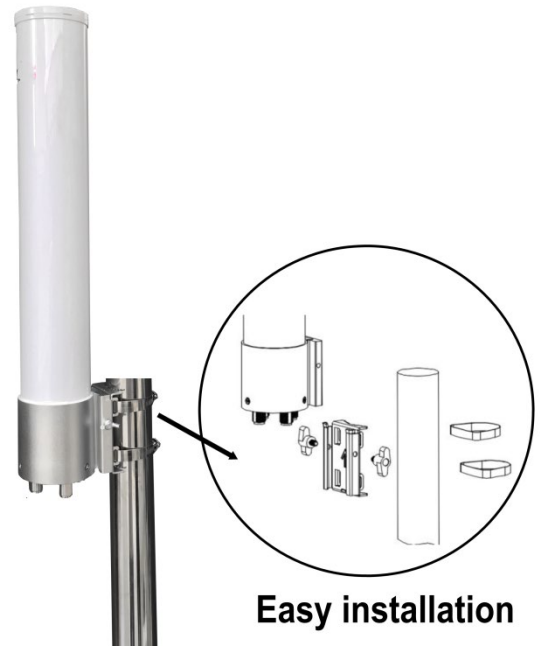
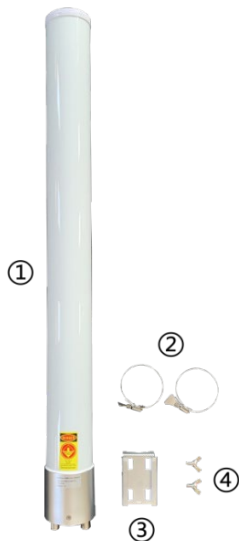


Dual Polarity WiFi MIMO 360° Omni Antenna, 5150 to 5850 MHz, 13 dBi, SMA Female

ANT-PT-00024

FEATURE

- 5.1-5.8 GHz Outdoor Wireless LAN systems
- Supports 1x2 and 2x2 MIMO AP/Routers
- IEEE 802.11a/n applications
- WiMax, WISP, WiFi, Communication
- Hospitality, Industrial, Municipality, MTU/MDU



Accessories	Quantity
1. Antenna	1
2. Fastener	2
3. Bracket	1
4. Screw	2

ELECTRICAL SPECIFICATIONS

Model	
Frequency Range	5150-5850 MHz
Gain	13 dBi
VSWR	≤ 1.5
Polarization Type	H+V
Input Impedance	50Ω
Horizontal Beamwidth	360°
Vertical Beamwidth	6°

MECHANICAL SPECIFICATIONS

Maximum Power	100W
Connector Type	2×N-K
Lighting Protection	DC Ground
Dimension	Φ75x765mm
Weight	2.4 kg
Rated Wind Velocity	210km/h
Working Temperature	-40°C~+60°C