

## Installation Instructions for Grid Antennas

When installing grid antennas, please adhere to the following steps.

**Step 1:**

Join the two grid mesh sheets together and fix them with screws and nuts.



**Step 2:**

Fix the L-shap clamp onto the back of grid sheet joint parts.



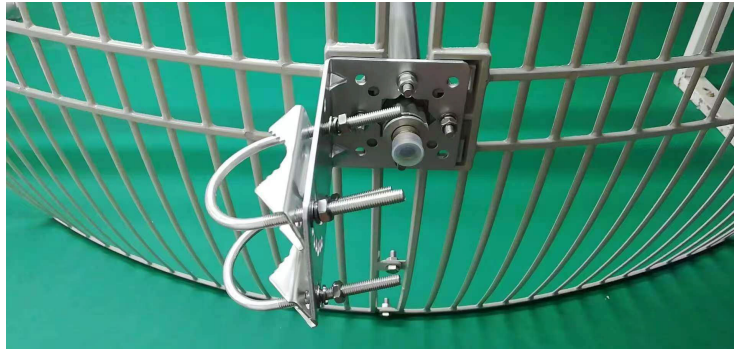
Please note some grid antenna using this following heavy duty L-shape clamp:



Step 3:

Pull out the pigtail cable through the hole on the clamp (if there is) and fasten the feeder to the grid sheet joint parts.

This antenna can be configured with either Horizontal or Vertical Polarization.



Step 4:

Position the Mounting Clamp on the Pole at the desired height and fasten using the two U-Bolts and M8 fasteners.

Step 5:

Connect the radio using the (2) cable assemblies provided with the antenna.

Finally Image after Installation (for reference):

